

# Rare Case of Dual Right Coronary Artery Intervention Presenting as Acute Coronary Syndrome

Anish Hirachan<sup>1\*</sup>, Ranjit Sharma<sup>2</sup>, Prabace Neupane<sup>3</sup>

Department of Interventional Cardiology, Nepal Mediciti Hospital, Lalitpur, Nepal

\*Corresponding Author: Anish Hirachan, Department of Interventional Cardiology, Nepal Mediciti Hospital, Lalitpur, Nepal

Received Date: May 31, 2021; Accepted Date: August 02, 2021; Published Date: August 06, 2021

Citation: Anish Hirachan, Ranjit Sharma, Prabace Neupane, (2021) Rare Case of Dual Right Coronary Artery Intervention Presenting as Acute Coronary Syndrome. *J. Clinical Cardiology and Cardiovascular Interventions*, 4(16); Doi:10.31579/2641-0419/189

Copyright: © 2021 Anish Hirachan, This is an open-access article distributed under the terms of the Creative Commons Attribution License, which permits unrestricted use, distribution, and reproduction in any medium, provided the original author and source are credited.

## Abstract

Dual right coronary artery (RCA) is a very rare coronary anomaly. This anomaly is often undetected and may be totally asymptomatic to presenting as acute coronary syndrome.

Here, we present a young diabetic male who presented with acute onset severe chest pain of 30 minutes duration which was managed as acute coronary syndrome (NSTEMI-ACS). His urgent coronary angiogram revealed single ostial origin of right coronary artery (RCA) with total occlusion from proximal segment followed by double right coronary arteries with their respective distal branches.

**Key words:** acute coronary syndrome; right coronary artery; echocardiogram

## History of Presentation:

A 41 year old male presented to the emergency department with history of severe retrosternal discomfort of 30 minutes duration radiating to neck and jaw which was associated with nausea and profuse sweating. His general examination was within normal limits. His BP was 130 /70 mmHg, with HR of 56/min and was clinically afebrile.

## Medical History:

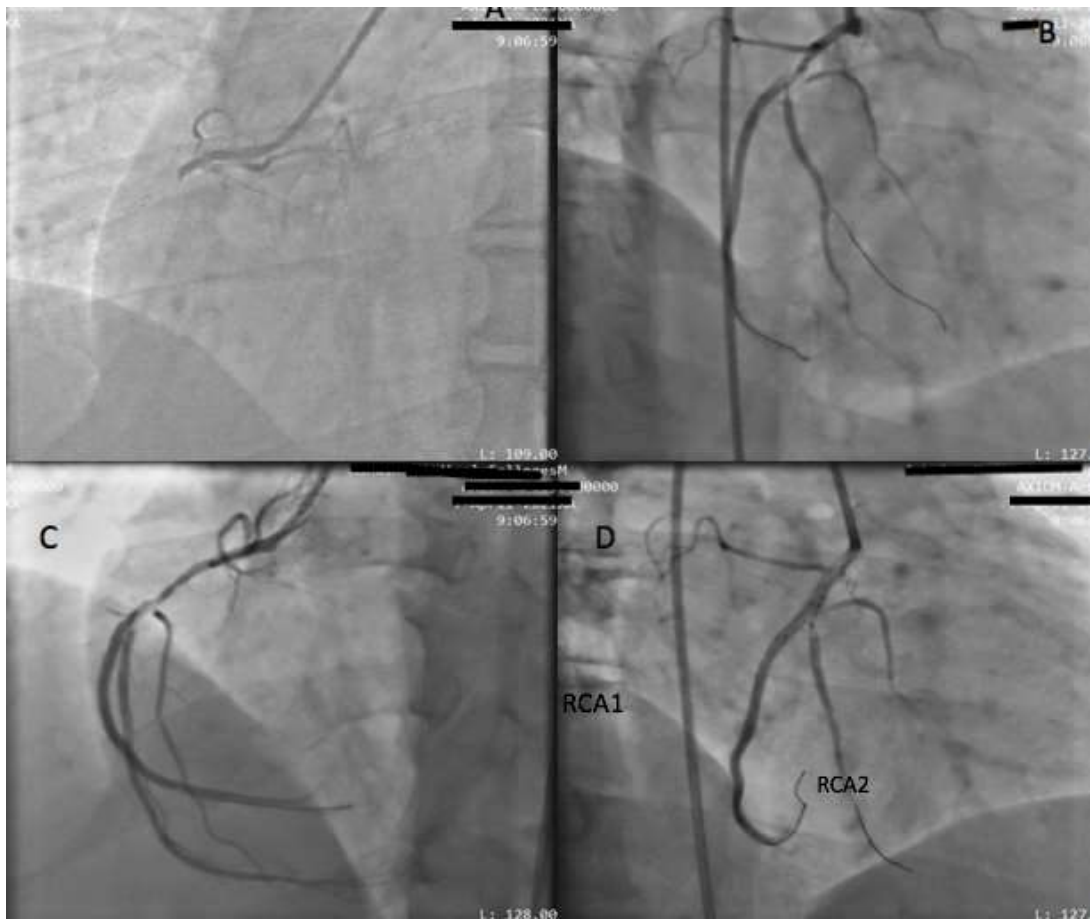
He was a chronic smoker and diabetic on oral hypoglycaemic agents including oral metformin and glimepiride daily. He had no known allergies, no thyroid disorders, dyslipidemia or any cardiovascular illness prior to admission.

## Investigations:

After admission to the ER, urgent EKG done showed normal sinus rhythm with T wave inversion in lead III, I, and AVL with Mobitz Type II AV block. His biochemical parameters were within normal limits except for a rise in troponin level (8.5 ng/ml). His bedside echocardiogram showed no regional wall motion abnormalities with ejection fraction of 60 %, no effusion, normal aortic root dimension and no dissection. His Chest Xray was also normal. In the background of ECG changes and typical angina symptoms, he was preloaded with tablet aspirin 300 mg, clopidogrel 300 mg and Atorvastatin 40 mg and shifted to cardiac catheterization lab for primary coronary intervention after a proper informed consent.

## Management:

Urgent coronary angiogram done via right radial route showed normal origin, flow and caliber in left anterior descending artery (LAD) and left circumflex artery (LCX). Right coronary artery was originating from right sinus and had total thrombotic occlusion from proximal segment (**Figure A**). Further, coronary wiring was done with Sion Blue 0.014" (ASAHI INTEC, Japan) wire through the lesion which revealed tight occlusive lesion at the proximal RCA after pre-dilatation with 2.0x12 mm non-compliant balloon at 13 atmospheric pressure (atm). Repeat angiogram in left anterior oblique (LAO) view and right anterior oblique view (RAO) showed single proximal RCA which bifurcated into two major RCA branches almost parallelly into giving separate distal branches with tight 90 % stenosis in proximal part of first RCA (RCA1) and 70-80 % stenosis in the ostioproximal segment of the second RCA (RCA2) (**Figure B and C**). The coronary wire was re-parked into the larger RCA branch (RCA1) and the lesion was stented across with a Xience Xpedition 3X38 mm (Abbot, USA) drug eluting stent followed by a simultaneous kissing balloon inflation in both the stented segment and the ostioproximal segment of RCA 2 with 3x15 mm and 2.0 x 15 noncompliant balloon (NC) (**Figure D**). No periprocedural complications noted and with residual less than 20 % -30 % stenosis in the second RCA branch (RCA2) (**Figure E**). His hospital stay was uneventful with no peri and post procedural complications. He was discharged with dual antiplatelet, high dose statin and beta blockers and oral hypoglycemic agents and advised for a regular followup at the cardiology clinic.



**Figure A:** Total occlusion of RCA from Proximal segment, **Figure B –** Dual RCA branches after predilatation with significant stenosis in both the branches ( RAO view ), **Fig C –** Dual RCA branches run parallel to give distal branches ( LAO view ). **Figure D –** Simultaneous kissing balloon inflation in both the RCA1 and RCA 2 branches.



**Figure E:** Final angiogram showing TIMI III flow and residual stenosis in the second RCA 2 branch

**Discussion:**

Various coronary anomalies are often incidentally detected on coronary angiogram. Double right coronary artery (RCA) is a very rare coronary anomaly, whose true definition and correct diagnosis remain controversial. [2] The first report about double RCA anomaly in the

literature was by Barthe et al [3] where they observed double RCA originating from one ostium. Double RCA though being a relatively rare entity, it is not necessarily benign, as it has been associated with atherosclerosis, life-threatening arrhythmia and even myocardial infarction. [4-6] In the absence of atherosclerotic stenosis, ischemia can be a result of anatomical malformations, including an acute takeoff angle

of the anomalous vessel, myocardial squeezing, vasospasm and a small artery. [7]

Some authors have claimed that it is very difficult to distinguish double RCA with single orifice, from RCA which has a high take-off from a large right ventricular artery, solely by coronary angiography. Nevertheless, they have mentioned that right anterior oblique (RAO) view provides better demonstration of artery courses and may be helpful in differentiating double RCA from a large right ventricular branch.<sup>8</sup> Our index case had a thrombotic occlusion of the proximal right coronary artery which after pre-dilatation of the occluded segment revealed dual right coronary artery branches (RCA1, RCA 2) which were of equal caliber and coursed parallel and gave equal posterior descending branches towards the inferior myocardium. Further, the case was associated with a tight stenosis in the proximal RCA1 branch (posterior) as well as tight ostioproximal stenosis in the RCA 2 origin (anterior). Coronary angioplasty and stenting was done across proximal RCA to RCA 1 branch followed by simultaneous kissing balloon inflation across both the major RCA branches. Being an acute coronary syndrome with thrombotic occlusion, double stenting strategy was deferred despite of significant lesion across the proximal RCA 2 branch to keep the procedure quick and less complicated.

In most of the reported double RCA cases with atherosclerosis, the atherosclerotic segment is usually in the proximal part of the RCA that courses on the atrioventricular (AV) sulcus or in the posterior branch of the RCA going to the AV sulcus. [9] Similarly, our case had an acute thrombotic occlusion in the proximal RCA segment which underwent successful angioplasty

#### Follow-up:

The patient was symptomatically better and no fresh complaints at first follow up at first month after discharge.

#### Conclusion:

Double RCA though can be a very rare anomaly, every interventionist must be well familiar with this anomaly so as to make a proper examination and plan intervention accordingly.

#### Funding Support and Author Disclosures

I the principal author – Dr Anish Hirachan have no funding support or any grants as well as no disclosure to make. All other authors have reported that they have no relationships relevant to the contents of this paper to disclose.

#### References:

1. Lim JC, Beale A, Ramcharitar S; Medscape. Anomalous origination of a coronary artery from the opposite sinus. *Nat Rev Cardiol* 2011;8(12):706–719.
2. Tuncer C, Batyraliev T, Yilmaz R, Gokce M, Eryonucu B, Koroglu S. Origin and distribution anomalies of the left anterior descending artery in 70,850 adult patients: multicenter data collection. *Catheter Cardiovasc Interv.* 2006;68(4):574-585.
3. Barthe JE, Benito M, Sala J, Houbani AJ, Quintana E, Esplugas E, Gausi C, et al. Double right coronary artery. *Am J Cardiol.* 1994;73:622.
4. Timurkaynak T, Ciftci H, Cengel A. Double right coronary artery with atherosclerosis: A rare coronary artery anomaly. *J Invasive Cardiol.* 2002;14:337-339.
5. Ozeren A, Aydin M, Bilge M, Dursun A, Onuk T. Atherosclerotic double right coronary artery and ectasia of left coronary arteries in a patient with presented acute coronary syndrome and ventricular tachycardia. *Int J Cardiol.* 2005;102:341-343.
6. Rohit M, Bagga S, Talwar KK. Double right coronary artery with acute inferior wall myocardial infarction. *J Invasive Cardiology.* 2008;20:37- 40.
7. Sari I, Davutoğlu V, Aksoy M. The correct number of double right coronary artery reported in the literature. *Int J Cardiol.* 2008;130:283-284
8. A. Altun, O. Akdemir, O. Erdogan, and G. Ozbay, “An interesting diagnostic dilemma: double right coronary artery or high take off of a large right ventricular branch,” *International Journal of Cardiology*, vol. 82, no. 1, pp. 99–102, 2002.
9. Sacks HS, Fain JN. Human epicardial adipose tissue: a review. *Am Heart J* 2007;153:907-917



This work is licensed under Creative Commons Attribution 4.0 License

To Submit Your Article Click Here: [Submit Manuscript](#)

DOI: [10.31579/2641-0419/189](https://doi.org/10.31579/2641-0419/189)

#### Ready to submit your research? Choose Auctores and benefit from:

- ❖ fast, convenient online submission
- ❖ rigorous peer review by experienced research in your field
- ❖ rapid publication on acceptance
- ❖ authors retain copyrights
- ❖ unique DOI for all articles
- ❖ immediate, unrestricted online access

At Auctores, research is always in progress.

Learn more [www.auctoresonline.org/journals/clinical-cardiology-and-cardiovascular-interventions](http://www.auctoresonline.org/journals/clinical-cardiology-and-cardiovascular-interventions)